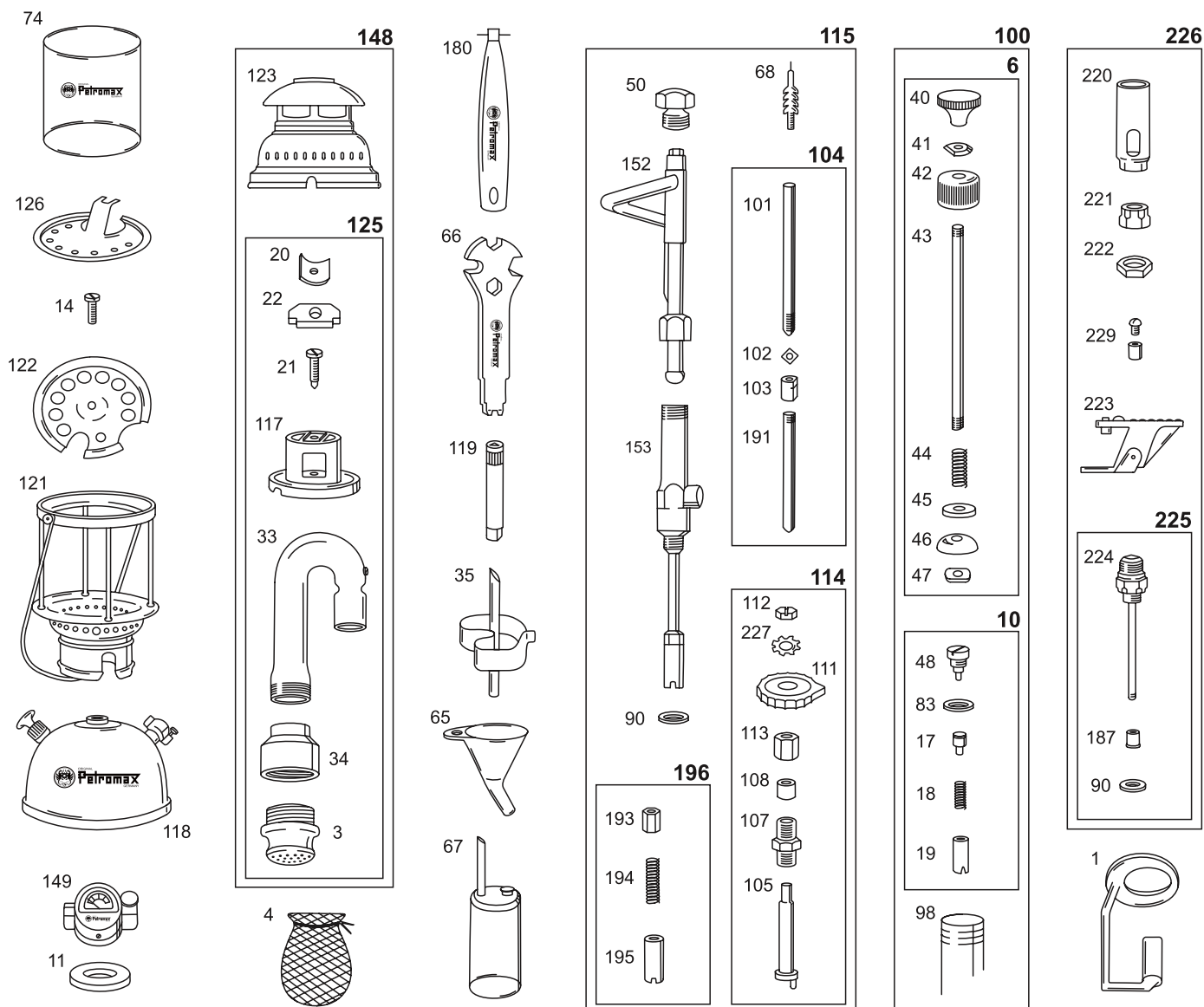


- |                             |  |                                |                                     |
|-----------------------------|--|--------------------------------|-------------------------------------|
| 1. Double tie mantle holder | 42. Pump cap                           | 104. Whole guide nod           | 180. Needle for manual cleaning     |
| 2. Double tie mantle        | 43. Pump plunger rod                   | 105. Eccentric shaft           | 187. Screen for rapid pre-heater    |
| 3. Clay burner              | 44. Spring for pump                    | 107. Eccentric fitting         | 191. Valve rod                      |
| 4. Incandescent mantle      | 45. Pump plunger plate                 | 108. Graphite pack             | 193. Carburettor valve gasket       |
| 6. Whole Pump plunger       | 46. Leather collar                     | 111. Grip wheel                | 194. Carburettor valve spring       |
| 10. Whole Pump valve        | 47. Pump plunger nut                   | 112. Nut for grip wheel        | 195. Carburettor valve jacket       |
| 11. Manometer gasket        | 48. Valve screwing                     | 113. Cap nut                   | 196. Whole carburettor valve        |
| 13. Vent screw              | 50. Spray nozzle                       | 114. Whole eccentric           | 220. Flame protection tube          |
| 14. Centring screw          | 65. Filling hopper                     | 115. Whole carburettor         | 221. Pre-heater nozzle              |
| 17. Valve insert            | 66. Universal key                      | 117. Inner cleading            | 222. Nozzle nut                     |
| 18. Valve spring            | 67. Filling can                        | 118. Tank                      | 223. Whole tilt lever               |
| 19. Valve jacket            | 68. Needle                             | 119. Needle key                | 224. Connector for rapid pre-heater |
| 20. Pressure piece          | 74. Glass cylinder                     | 121. Supporting grame          | 225. Whole connector                |
| 21. Screw                   | 83. Valve gasket                       | 122. Centring bottom           | 226. Whole pre-heater               |
| 22. Piling                  | 90. Gasket, carburettor and pre-heater | 123. Hood with cap             | 227. Grommet for grip wheel         |
| 32. Regulating screw        |  | 125. Whole inner cleading      | 229. Socket with gasket and screw   |
| 33. Mixing shaft            | 98. Pump cylinder                      | 126. Protection plate          |                                     |
| 34. Mixing chamber          | 100. Whole pump                        | 148. Whole upper part          |                                     |
| 35. Pre heating basin       | 101. Guide rod                         | 149. Manometer                 |                                     |
| 40. Nub of pump plunger     | 102. Counternut                        | 152. Upper part of carburettor |                                     |
| 41. Locking screw           | 103. Guide piece                       | 153. Lower part of carburettor |                                     |
|                             |  |                                | Tr Support rod                      |



- |                             |  |                                |                                     |
|-----------------------------|--|--------------------------------|-------------------------------------|
| 1. Double tie mantle holder | 42. Pump cap                           | 104. Whole guide nod           | 180. Needle for manual cleaning     |
| 2. Double tie mantle        | 43. Pump plunger rod                   | 105. Eccentric shaft           | 187. Screen for rapid pre-heater    |
| 3. Clay burner              | 44. Spring for pump                    | 107. Eccentric fitting         | 191. Valve rod                      |
| 4. Incandescent mantle      | 45. Pump plunger plate                 | 108. Graphite pack             | 193. Carburettor valve gasket       |
| 6. Whole Pump plunger       | 46. Leather collar                     | 111. Grip wheel                | 194. Carburettor valve spring       |
| 10. Whole Pump valve        | 47. Pump plunger nut                   | 112. Nut for grip wheel        | 195. Carburettor valve jacket       |
| 11. Manometer gasket        | 48. Valve screwing                     | 113. Cap nut                   | 196. Whole carburettor valve        |
| 13. Vent screw              | 50. Spray nozzle                       | 114. Whole eccentric           | 220. Flame protection tube          |
| 14. Centring screw          | 65. Filling hopper                     | 115. Whole carburettor         | 221. Pre-heater nozzle              |
| 17. Valve insert            | 66. Universal key                      | 117. Inner cleading            | 222. Nozzle nut                     |
| 18. Valve spring            | 67. Filling can                        | 118. Tank                      | 223. Whole tilt lever               |
| 19. Valve jacket            | 68. Needle                             | 119. Needle key                | 224. Connector for rapid pre-heater |
| 20. Pressure piece          | 74. Glass cylinder                     | 121. Supporting frame          | 225. Whole connector                |
| 21. Screw                   | 83. Valve gasket                       | 122. Centring bottom           | 226. Whole pre-heater               |
| 22. Piling                  | 90. Gasket, carburettor and pre-heater | 123. Hood with cap             | 227. Grommet for grip wheel         |
| 32. Regulating screw        | 98. Pump cylinder                      | 125. Whole inner cleading      | 229. Socket with gasket and screw   |
| 33. Mixing shaft            | 100. Whole pump                        | 126. Protection plate          |                                     |
| 34. Mixing chamber          | 101. Guide rod                         | 148. Whole upper part          |                                     |
| 35. Pre heating basin       | 102. Counternut                        | 149. Manometer                 |                                     |
| 40. Nub of pump plunger     | 103. Guide piece                       | 152. Upper part of carburettor |                                     |
| 41. Locking screw           |  | 153. Lower part of carburettor |                                     |